



COMPETITOR RESPONSIBILITIES

- Attend race and safety briefing
- Make their own decision whether to race - **including competency re paddling over the bar, beach change over, launching off a beach, returning over the bar.**
- Are responsible for the wellbeing of their fellow competitors should a safety vessel not be in the vicinity to assist
- All competitors confirm that they can swim and shall wear approved personal flotation devices at all times

RACE 1 - BRIEFING

- Encourage good practice e.g. appropriate clothing and equipment
- All Waka must complete a safety check and use spray skirts
- Swell: TBC
Wind: TBC
- Support craft will be on the course during the event identified by bright flags - they will be in VHF and phone communication with shore officials and emergency personnel. Jetskis will patrol the bar for waka crossing in both directions.
- Qualified First Aid personnel will be both onshore and on the water – location of first aid post - Mangawhai Boating and Fishing Club / Waipu Cove SLSC
- The event course is printed and on display at registration.
- All waka are to carry their team relay baton to Waipu and Back.
- Waka must report any withdrawal from the race (DNF) to safety boats or shore officials.



RACE 1 - COURSE

- **Start to Headrock** - All waka to line up behind the classic launch and the starting boat that will be positioned on the sandspit side of the estuary. They will raise a red flag for teams to get ready, followed by a green flag and an airhorn to start the race. Be aware of moored boats, recreational boats and swimmers in the estuary, shallow water on the right of the harbour, strong currents and surfers paddling across the channel and on the bar.

Head Rock to Breamtail - Make your way out through the channel around Head Rock and pass on the outside of the buoy at Head Rock. This buoy indicates shallow rocks **DO NOT** pass on the inside. Once you past the buoy you can head towards Bream Tail. Jetskis will be keeping an eye on everyone crossing the bar and will join the support team once everyone is safely over the bar.

As you head towards Bream Tail you will pass Mangawhai beach and Pohutakawa Bay which are exit points if you need to withdraw for any reason. Raise your paddles above your head if you need assistance.

There are submerged rocks around Flat Rock and Bream Tail to be aware of.

Bream Tail to Langs - Make a heading for the first of 3 yellow buoys at Langs beach. There is a Bombie reef off the point at Langs - beware this does actually break if there is a swell running. There are also submerged rocks at Langs point. There is a safe exit point at the eastern end of Langs Beach if you need to withdraw. Remember to raise your paddles above your head if you need assistance.

Mangawhai Waka Ama Surf to Surf 2025

5th & 6th April - RACE BRIEFINGS



Langs to Waipu - You must go inside all 3 Yellow buoys (ama out) at Langs beach. Then you will continue on to the change over point which is North of the Campground at Waipu Beach.

Do not come in at the surf club or the campground.

There will be two buoys - you need to pass the first buoy ama in and make your way into the beach.

There may be surf and wind to manage so be careful not to ram into other waka on the beach or on a wave.

We're all competitive but we need to look after our **Waka Taonga**.

Relay Change over at Waipu - Once on the beach run your baton to the change over point marked by a gazebo and frantically waving excited people. Pass the baton to their next team member and that person **must wait for 5 minutes**, in a holding pen. This will give your crew time to move the waka up the beach to the north to allow others to land safely and also get your waka closer to the exit buoy. Your split time will be recorded and a timekeeper will keep you at the changeover point until 5 minutes is over.

Run back to your waka, launch and then head out past the northern exit buoy. You must go around this buoy ama out.

Lead boat will take you back through the course in reverse.

NOTE IF YOUR TEAM IS TRAVELLING ON THE SHUTTLE, THE SHUTTLES WILL RETURN WHEN THEY ARE FULL OR THE LAST BOAT HAS LANDED AND IS ONBOARD. DON'T MISS THE BUS!

Oncoming Waka - You may encounter waka heading to Waipu.

Waka heading to Waipu have the right of way. If you are heading back to Mangawhai you must give way to waka heading to Waipu.

Mangawhai Waka Ama Surf to Surf 2025

5th & 6th April - RACE BRIEFINGS

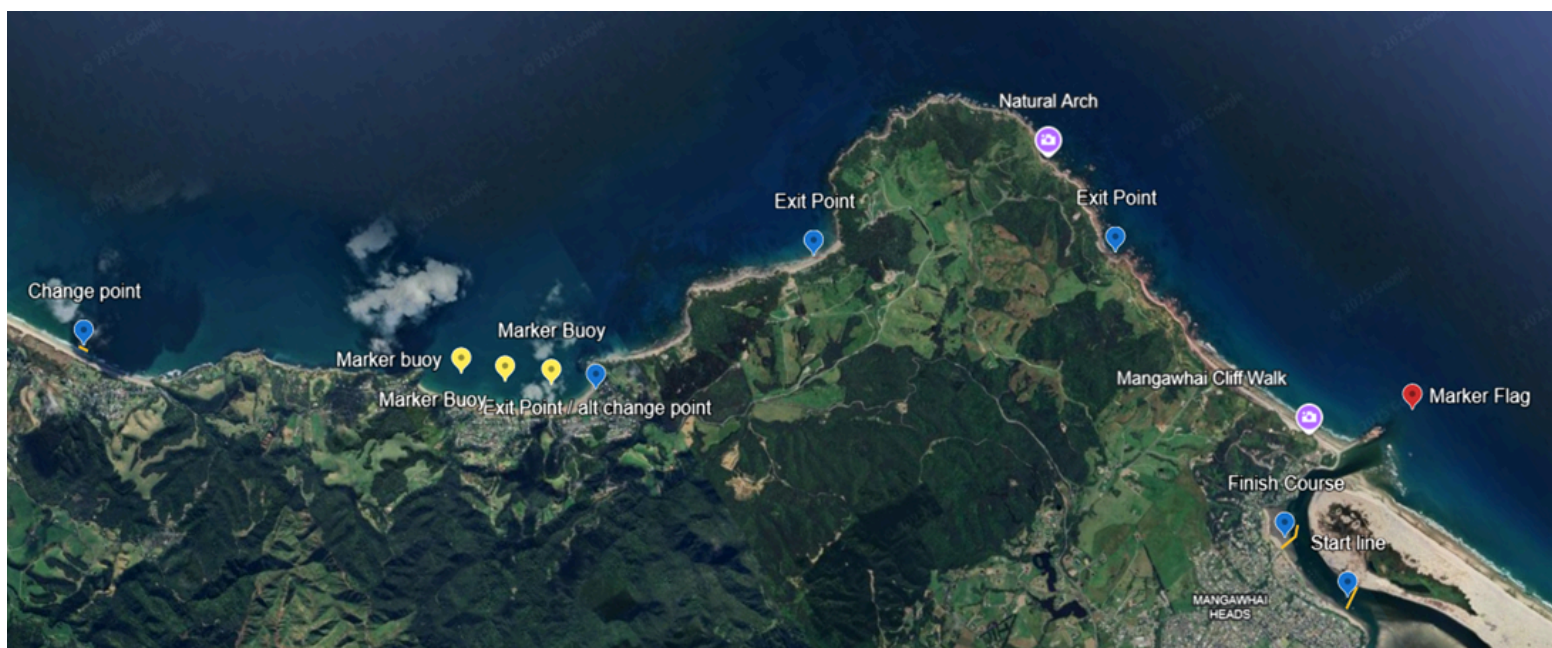


Langs beach 3 yellow buoys to Bream Tail - You must pass with the yellow buoys on your ama side. If you encounter waka heading to Waipu, they have the right of way. Waka heading to Mangawhai need to pass other waka with them on your Left (ama side). Give them room to hug close to the yellow buoys.

Bream Tail to Head Rock - Remember the submerged rocks and the buoy at head rock that you will now need to pass ama out. Tide should be Mid to High when you come back so it should make for safe passage back in over the bar safely. Jetskis will be on hand at the bar.

Head Rock to Finish line - Make your way up the harbour, you must go around Amokura (the blue boat) non ama side and straight into the beach. Your baton holder will need to run up to the Finish line Between the Carters flags, In front of registration.

Race 1 Course



Mangawhai Waka Ama Surf to Surf 2025

5th & 6th April - RACE BRIEFINGS



Waipu Change Point - if travelling by car to Waipu (as opposed to the shuttle), please park in the carpark at the northern end of the Waipu campground - just before the 80kmp sign after leaving Waipu Cove



Race 1 Saturday - W6 RELAY (15Km x 2) - ocean

7.00am	Registration, waka drop off & safety checks
8.30am	Karakia
8.45am	Race & safety briefings
9.00am	Racing starts
9.05am	Shuttle(s) departs to Waipu Cove
TBC	Shuttle(s) return from Waipu Cove
1.00pm	Racing finishes
4.00pm	Prizegiving
4.00pm	Closing Karakia



RACE 2 - BRIEFING

- Encourage good practice e.g. appropriate clothing and equipment
- All Waka must complete a safety check and spray skirts are optional
- Low tide: 7.02am
High tide: 2.13pm
Wind: TBC
- Inform paddlers of any dangers while launching.
- Support craft will be on the course during the event identified by bright flags - they will be in VHF and phone communication with shore officials and emergency personnel.
- At any time you need assistance please raise your paddle above your head and support craft will come to you.
- Qualified First Aid personnel will be both onshore and on the water – location of first aid post: Mangawhai Boating and Fishing Club

RACE 2 - COURSE

- **Start** - All waka to line up behind Amokura (blue boat) and the starting boat. The starting boat will be positioned on the oceanside of the estuary, they will raise a red flag for teams to get ready, followed by a green flag and an airhorn to start the race.
Be aware of moored boats, dredge and pipeline, recreational boats and swimmers in the estuary, shallow water on the sand bars.

Paddle to the 5 Knot Yellow Buoy - Pass it on the ocean side (ama out).

Mangawhai Waka Ama Surf to Surf 2025

5th & 6th April - RACE BRIEFINGS



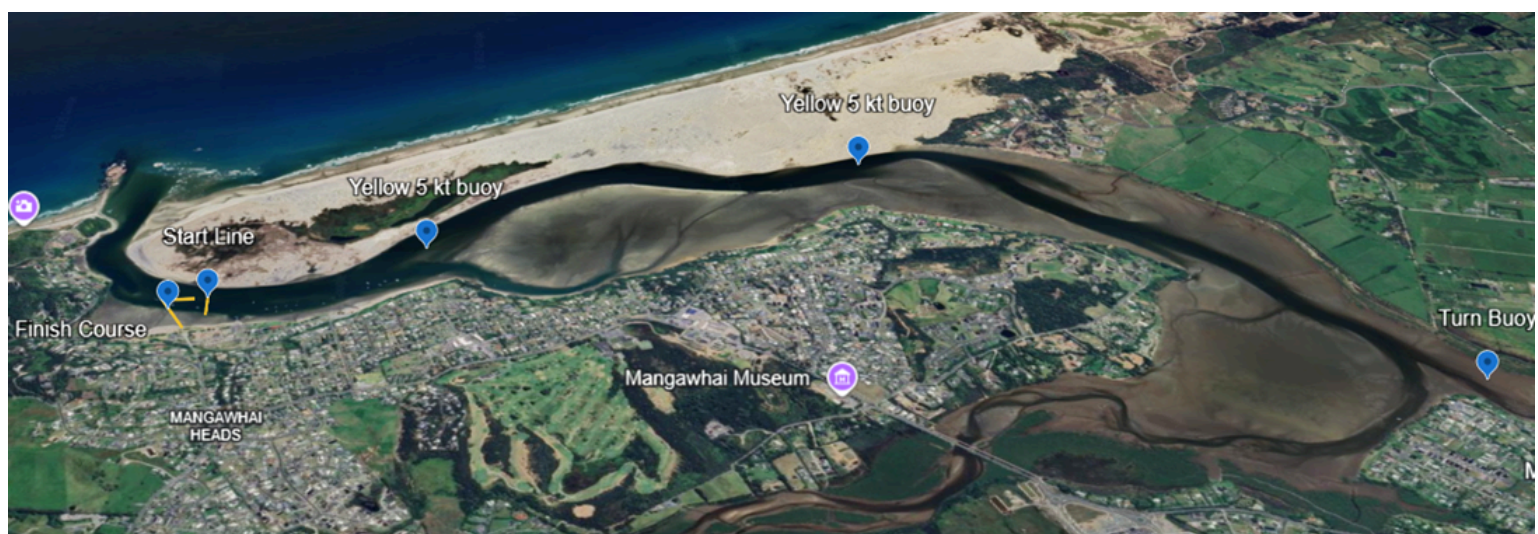
5 Knot Yellow Buoy to Tern Point - Paddle up the estuary towards Tern Point, you must pass between the green and red buoys at Tern Point. A support craft will be policing this.

Hazards to be wary of are recreational boats water skiing, support boats will ask them to watch out for our waka crews.

Tern Point to Tavern Yellow Buoy - Paddle towards the tavern. Left of the tavern is another yellow buoy - this is the halfway point. You must complete an Ama in turn around (Right to Left).

Head home and do the same course in reverse - On the way back you must paddle between the green and red buoys at Tern point and pass the yellow 5 knot buoy on the ocean side ama in.

5 Knot Yellow to Finish - Paddle around the wharf and straight into the beach here. One of your crew will need to run up to the Finish line between the Carters flags, In front of registration. Fastest time wins!!!



Mangawhai Waka Ama Surf to Surf 2025

5th & 6th April - RACE BRIEFINGS



Race 2 Saturday - W6 10Km - short course in Estuary	
12.00pm	Registration, & safety checks
1.00pm	Race & safety briefings
1.30pm	Racing starts
3.30pm	Racing finishes
4.00pm	Prizegiving
4.00pm	Closing Karakia



OC4 SURFING CHALLENGE

Mangawhai Waka Ama are proud to bring to you this OC4 surfing event. We have a wonderful bar that boasts some amazing waves for all water sports. We invite teams from across Aotearoa to take part in one of the first OC4 Surf events in NZ waters.

If the conditions are good we can enjoy a day of fun waves on the bar.

COMPETITOR RESPONSIBILITIES

- Attend race and safety briefing
- Make their own decision whether to compete - including **competency re conditions on the bar.**
- Are responsible for the wellbeing of their fellow competitors in the case of capsize NB spinal stabilisation procedure (below)
- All competitors confirm that they can swim and shall wear approved personal flotation devices at all times.

NB for OC4 surf event helmets are recommended.

SPINAL STABILISATION

We will carry out a demonstration of Spinal Stabilisation procedure in case of capsize and injury.

- Ensure airway open
- One paddler supports head and maintains alignment on shoulders – second paddler supports waist and hips - log roll paddler onto back if necessary
- Support paddler until out of surf zone and IRB and spinal board arrive from surf club – keep calm and reassure patient



OC4 SURFING CHALLENGE - BRIEFING

- Encourage good practice e.g. appropriate clothing and equipment
- All Waka must complete a safety check I
- Swell: TBC
- Low tide: 7.02am
High tide: 2.13pm
Wind: TBC
- Inform paddlers of any dangers while launching.
- Jetskis with sleds will patrol the bar for the competition with assistance from surf club IRB's if required.
- At any time you need assistance please raise your paddle above your head and support craft will come to you.
- Qualified First Aid personnel will be onshore – location of first aid post: Mangawhai Head SLSC

OC4 SURFING CHALLENGE - EVENT RULES

- The event will be run in heats with 2 or more waka.
- At the discretion of the Event Director, we may hold Semi-Finals and/or Finals.
- The heats will be of the appropriate duration (Approx 30 mins), according to the surfing conditions, to be decided by the Event Director.
- All teams must compete with 4 paddlers in the canoe. If one or more crew members fall from the waka, the ride after the fall will not be considered by the judges for scoring purpose.
- Heat starts will be signaled with ONE horn and /or the GREEN flag will be raised on the support craft/beach.



- Heat finishes will be signaled with TWO blasts of the horn and /or a RED flag will be raised on the support craft/beach.
- At the end of your heat immediately make your way to the Sandspit where the next crews will be waiting for their heat.
- Teams may enter the water only after the end of the previous heat.
- There will be a 5 minutes interval between the end of a heat and the start of the next heat.

OC4 SURFING CHALLENGE - JUDGING

- Waves surfed are scored from 0-10.
Wave score is based on five quality levels: 0-2 (Poor), 2.1-4 (Average), 4.1-6 (Good), 6.1-8 (Very Good), 8.1-10 (Excellent).
- When scoring each wave, judges will consider the following elements, in the following order of importance:
 - Wave Size and Take-Off Commitment;
 - Ability to keep the canoe in the critical zone of the wave;
 - Wave Length;
 - Acrobatics;
- Your 2 best wave scores will be used to give you a combination score, highest combination score wins the heat

OC4 SURFING CHALLENGE - PRIORITY RULE

- A waka that paddles for a wave closest to the peak of the wave has priority.
- All teams are obliged to do everything possible not to interfere with the action of another waka about to enter a wave or during its performance on the wave.
- During the heat, the waka that paddles intensely for a wave and/or surfs this wave automatically loses priority for the next wave.

Mangawhai Waka Ama Surf to Surf 2025

5th & 6th April - RACE BRIEFINGS



- After surfing a wave, waka should return to the outside through the channel, to avoid interfering with another waka with priority, or causing a risky situation.
- Judges may penalise any priority interference.
- One waka per wave



Race 3 Sunday - W4 Surfing Competition

9.00am	Registration, & safety checks
9.30am	Competition & safety briefings
9.50am	Karakia
10.00.am	Competition starts NB Tsunami Alarm Testing
12.00pm	Competition finishes
12.15pm	Prizegiving
12.30pm	Closing Karakia