



## 2021 ACES RACE

Saturday 16<sup>th</sup> October 2021

**Panmure Wharf (Tamaki) to Birkenhead Terminal Wharf (Aratika)**

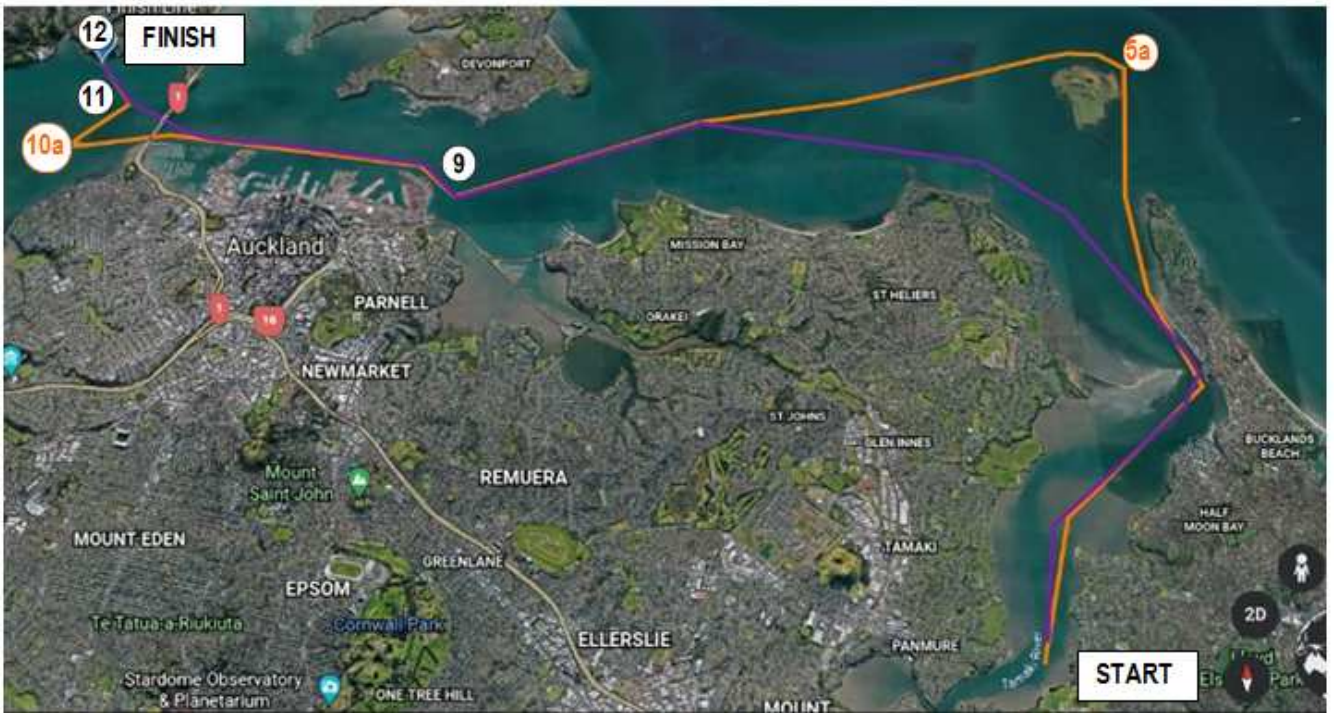
*Hosted by Tamaki Outrigger Canoe Club & Aratika Water Sports Club*

<b>DISTANCE</b>	<b>CATEGORIES</b>
<b>23km</b>	J19 Women's, J19 Men's, J19s Mixed, Golden Masters Women's, Golden Masters Men's, Golden Masters Mixed, Open, Masters, Senior Masters Women's
<b>27km</b>	Open Men's, Open Mixed, Master Men's, Masters Mixed, Senior Master Men's, Senior Masters Mixed,

## **RACE PROGRAMME**

<b>8.30 am</b>	All paddlers to arrive at Panmure Wharf, Tamaki Estuary end of Kings Road, Panmure for waka rigging,
<b>9:00am – 10.30am</b>	Registration / Waiver forms to be submitted
<b>10am</b>	Safety checks to commence
<b>11am</b>	Karakia / Race brief for 23km (W6), 27km (W6)
<b>12pm</b>	RACE START – 23km (W6)
<b>12.15pm</b>	RACE START – 27km (W6)
<b>4pm</b>	Race Finish
<b>5pm</b>	Prizegiving / Northcote Rugby Club

**Main Racecourse**



J19 Women's, J19 Men's, J19s Mixed, Golden Masters Women's, Golden Masters Men's, Golden Masters Mixed, Open, Masters, Senior Masters Women's

Open Men's, Open Mixed, Master Men's, Masters Mixed, Senior Master Men's, Senior Masters Mixed,

- ① Panmure Wharf
- ② Point England Reserve
- ③ Half Moon Bay
- ④ Buckland Beach
- ⑤ Tahuna Torea Spit
- ⑥ Karaha Beach
- ⑧ Beam Rock
- ⑨ Compass Dolphin
- ⑩ Westhaven Yellow Buoy
- ⑪ Rona Buoy
- ⑫ Finish - Birkenhead Terminal Wharf

- ① Panmure Wharf
- ② Point England Reserve
- ③ Half Moon Bay
- ④ Buckland Beach
- ⑤ Tahuna Torea Spit
- ⑤a Browns Island
- ⑧ Beam Rock
- ⑨ Compass Dolphin
- ⑩ Westhaven Yellow Buoy
- ⑩a Watchmen's Island
- ⑪ Rona Buoy
- ⑫ Finish - Birkenhead Terminal Wharf |

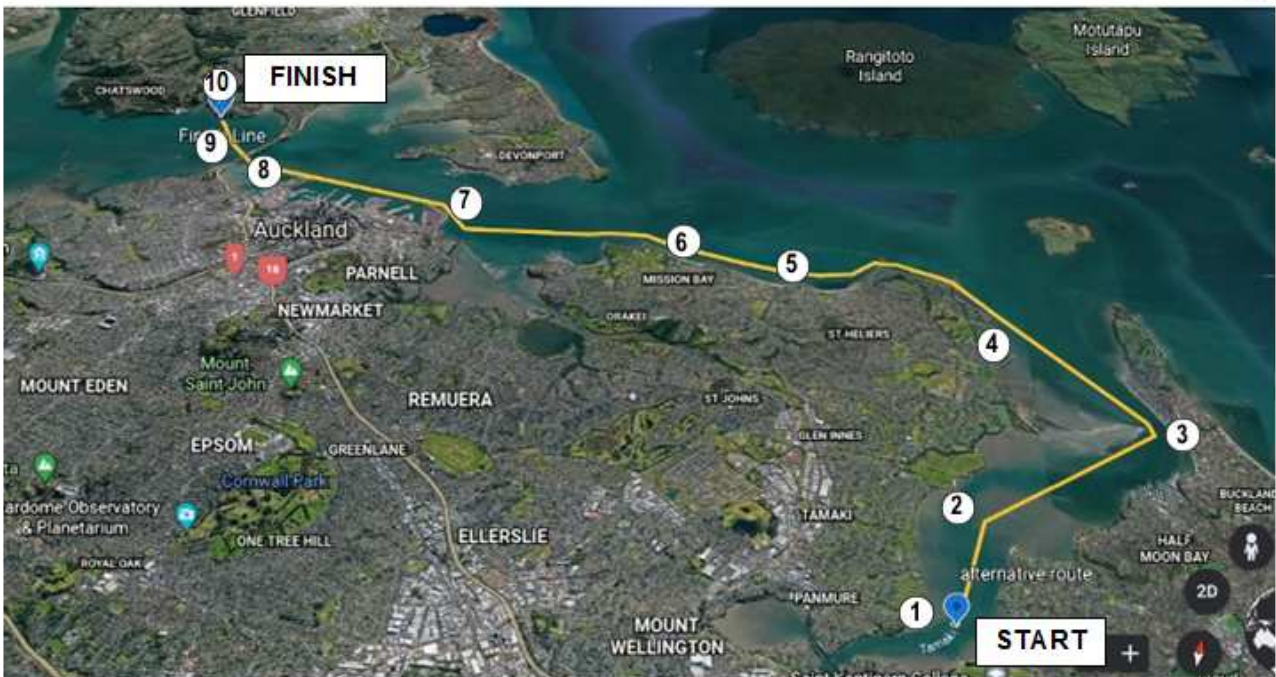
DESCRIPTION OF ROUTE

Once everyone leaves Panmure Wharf. They will wind their way towards mouth of Tamaki Estuary. Pass Point England on ama side, pass Half Moon Bay on the non ama side towards the Tahuna Torea Spit which is on the ama side & Bucklands Beach non ama side.

The J19s to Golden Masters Men's, Women's & Mixed categories will via Left and paddle pass Karaka Beach around to St Heliers Bay then BeamRock.

Open Men's to Senior Master Men's & Mixed categories will keep to the non ama side & paddle off from Bucklands Beach and Muisk Point the head to Right of Browns Island, once around head to Beam Rock, then same course as women to Compass Dolphin Channel Marker to Watchman Island AMA turn then to AMA turn around Rona to Birkenhead.

## Alternative Racecourse: Due to Adverse weather conditions



- ① Panmure Wharf
- ② Point England Reserve
- ③ Buckland Beach
- ④ Karaha Beach
- ⑤ St Heliers
- ⑥ Mission Bay
- ⑦ Compass Dolphin
- ⑧ Westhaven Yellow Buoy
- ⑨ Rona Buoy
- ⑩ Finish - Birkenhead Terminal Wharf

### DESCRIPTION OF ROUTE

Alternative course – 22km (for all teams)

J19s to Golden Master, Mens, Womens & Mixed pass Karaka Beach, St Heliers and hug the Tamaki Drive and head to Compass Dolphin to Westhaven Yellow Buoy, by pass Rona and head to Birkenhead.



**ACES RACE**  
**Saturday 16<sup>th</sup> October 2021**

**W6 Safety Check**

Race Number: \_\_\_\_\_

Team Name: \_\_\_\_\_

QTY	SAFETY GEARS	
6 x	PFD (lifejackets)	
2 x	Bailers	
1 x	<u>Flare</u> or <u>Mobile</u> in waterproof case	
2 x	Spare Paddle	
1 set	Spray Skirt	
1	Tow Rope	

Signed by Safety Officer \_\_\_\_\_

Date & Time \_\_\_\_\_